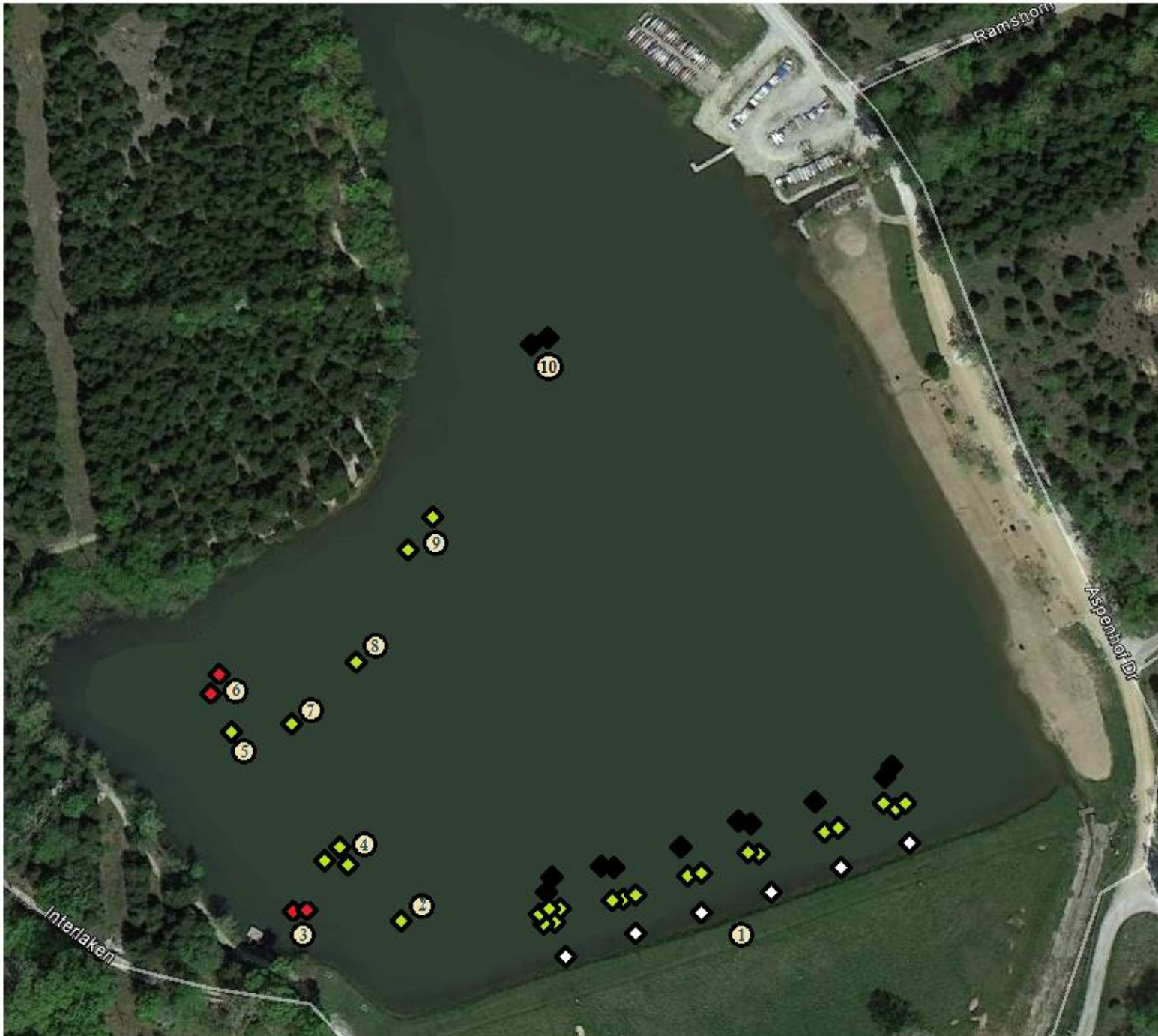


TOP SECRET ASPENHOF FISHING MAP



- ◆ Brush Pile
- ◆ Stump
- ◆ Cedar Log
- ◆ Rock Pile

1. In front of each Blue Martin house, and every 20 yards between, are a pile of rocks near shore, multiple brush piles in 8 to 10 feet of water, and 6 to 8 foot cedar logs in 10 to 12 feet of water.
2. In line with the bench farthest from the dam on the corner and the covered bench on the beach is a large brush pile.
3. Directly in front of the bushes that separate the corner from the dock are 2 huge hardwood stumps. A long cast can reach them from shore.
4. 3 brushpiles can be found in line with the dock and the left-most sign on the beach.
5. 1 brush pile can be found in line with the bench in the Western cove and the left-most sign on the beach.
6. 2 hardwood stumps can be found just North of point #5 in about 4 feet of water.
7. A brushpile can be found between the dock and a section of gravel path that comes to the water just before the bench on the Northwest point.
8. This brushpile was accurately marked as I left the GPS on shore. It is somewhere Northeast of #7. This is, no doubt, where the biggest fish will hide.
9. 2 large cedar trees are located between the bench on the point and each of the two Blue Martin houses.
10. 2 large cedar logs with 4 foot branches are sunk between the shoreline tree that arches out over the water and the left-most beach sign.